



### TECHNICAL INFORMATION

Watts:	3
Lumens:	210
Shape:	Round
Input Power:	AC:85-265V, 50/60Hz
Long Life:	20,000 Hours
Unit Color:	White
Body Type:	Aluminium
Cutting Size:	Ø73mm
PF:	>0.5
LED Chip Type:	SMD
CRI:	>80
Operation Temperature:	-25°C to +50°C
Dimmable:	No
Beam Angle:	120°
Color Temperature:	4000K
Dimension:	Ø84x12mm

### PREMIUM SERIES ROUND

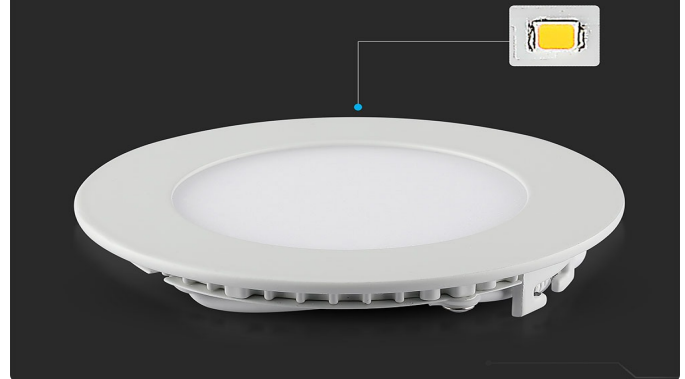
V-TAC's LED Lighting range includes lighting that fulfills the needs of various end-users and industries, offering efficient and innovative products that provide modern solutions at an affordable price. We are proud to also provide extended multi-year warranty on our products, as well as detailed support.

*One brand, endless solutions..*

SKU: 6293 - 1268 940

[View more details](#)

### SMD LED'S



### FEATURES

- Strong and sturdy Aluminium body
- Designed with high efficiency LED SMD chips.
- Easy to connect driver
- Non Dimmable driver included
- Suitable for offices, conference rooms, showrooms, lobbies, cabins, kitchens etc.

CE/EMC

CE/LVD



### PACKAGING

Gross Weight (Kgs): 0.14  
Unit CBM: 0.000378  
Dimension: Ø84x12mm

### MASTER BOX PACKAGING

Box Qty: 50  
Qty Per Pallet: 2000  
Length (Box) mm: 145  
Width (Box) mm: 30  
Height (Box) mm: 110

### LISTING DETAILS

Commodity Code: 9405403990  
Ean Code: 3800157616768